



## $^{177}\text{Lu}$ -EBRGD

### Targeting $\alpha_v\beta_3$ overexpressing tumors

In development for the treatment of Non-Small Cell Lung Cancer (NSCLC) and Glioblastoma Multiforme (GBM)

#### Challenges

- Limited number of NSCLC patients respond to immunotherapy
- No effective treatment for GBM
- NSCLC incidence 58/100k
- GBM incidence <5/100K

#### Solution

Conjugation of Evans Blue (EB) with RGD prolongs circulation half-life and improves tumor targeting over c(RGDfK) conjugates.

#### IP

Multinational approved patents

#### Proof of Concept

Extensive preclinical and Phase I theranostic studies show good safety and efficacy.

#### Next

- IND end 2023
- Phase I/II trials in 2024

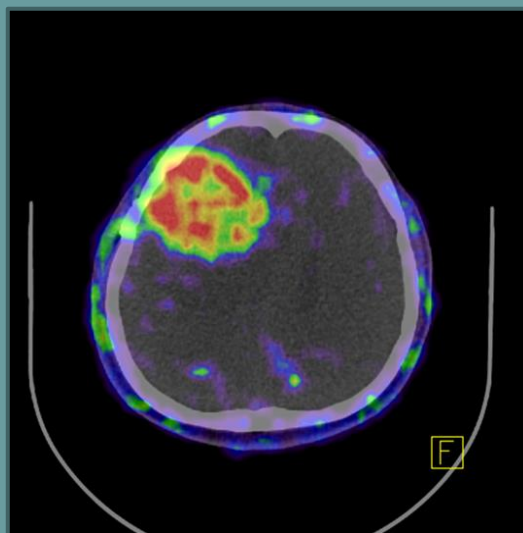
#### MTTI

Molecular Targeting Technologies, Inc. is clinical stage biotech developing novel, prolonged targeted radiotherapeutics (PTR) for disease treatment.

Contact: [cpak@mtarget.com](mailto:cpak@mtarget.com)

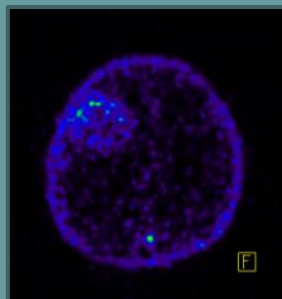
More information: [www.evathera.com](http://www.evathera.com), [www.mtarget.com](http://www.mtarget.com).

### PET/CT slice of a glioblastoma (GBM) patient

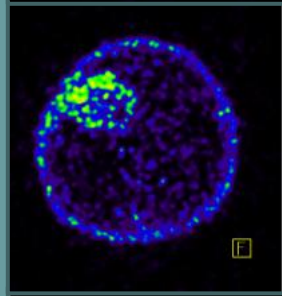


$^{64}\text{Cu}$ -EBRGD  
24 H post injection

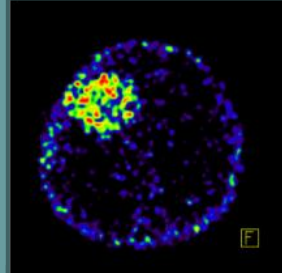
1 H



8 H



12 H



24 H

